

Fulton, Independence, Izard, Sharp & Stone Counties

# Community Resource List

for Young Children & Families

&

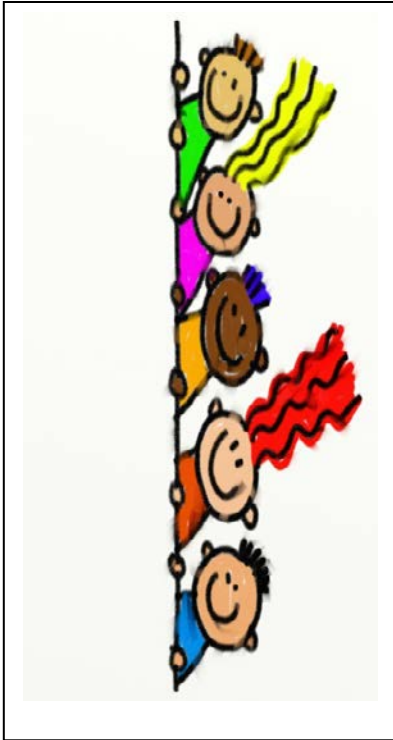
Kindergarten Transition Information



Publication of Southern Cavemen Pioneering for School Success  
School Readiness Team  
Fall 2018  
Compiled by NADC Staff

## TABLE OF CONTENTS

Page



|  |       |
|--|-------|
| Early Education & Special Service                | 3     |
| Child Care Assistance & Location Information     | 5     |
| Fun Educational Pre-K Websites & Apps - Free     | 5     |
| Medical Coverage                                 | 6     |
| Young Children Medical Providers                 | 5     |
| Hospitals  | 6     |
| Clinics  | 6     |
| Early Years Community Activities & Groups        | 7     |
| Adult Education                                  | 8     |
| Employment                                       | 9     |
| Adult Community Clubs & Organizations            | 10    |
| Adult & Family Counselors                        | 11    |
| Emergency Services                               | 12    |
| Abuse & Neglect                                  | 13    |
| Addiction Support                                | 13    |
| Legal Services                                   | 14    |
| Financial Assistance                             | 14    |
| Vision & Glasses Assistance                      | 14    |
| Prescription Drug Assistance                     | 15    |
| Pregnancy Assistance & Information               | 15    |
| Elderly Assistance & Activities                  | 16    |
| Free Meals                                       | 16    |
| Food Assistance                                  | 17    |
| Clothing Assistance                              | 18    |
| Veterans Assistance                              | 18    |
| Housing  | 19    |
| Water & Utilities                                | 20    |
| Utilities Assistance                             | 20    |
| Family Services                                  | 21    |
| Government Services                              | 22    |
| Transition to Kindergarten                       | 23-25 |
| School Choice                                    |       |
| Registration                                     |       |
| Documents for Registration                       |       |
| How to Obtain Missing Required Documents         |       |
| School Open House                                |       |
| Transportation by Bus                            |       |
| School Supplies                                  |       |
| Lunch Money & Payment                            |       |
| Allergies & Medicine                             |       |
| District Messaging System & Phone Numbers        |       |
| Online Grade Access                              |       |
| Extended Childcare Hours for School Age Children |       |
| School District Phone Numbers & Websites         | 26-27 |

## EARLY EDUCATION & SPECIAL SERVICES

### **Home Based Programs**

HIPPY w/ Southside School District (Sharp and Independence County) #870-251-4024

HIPPY w/Stone County #501-940-8159

Northcentral Arkansas Education Cooperative HIPPY (Izard and Fulton County) #870-581-3600

\*Serves 3 to 5 year old children

\*Group activities planned

\*Lessons left for family interaction and learning

Parents as Teachers w/ Batesville School District #870-793-0627

\*Serves pre-natal to age 5yr- Beginning Steps

\*Program for pregnant women

\*Program for mothers of all ages

\*Program for fathers

\*Program for teenage mothers

\*Program for grandparents as parents-GAP

\*Bi-lingual staff

\*Family nights with group activities

\*Assist with family needs

### **Fulton County Area Preschools**

Salem Head Start East (3 yr-5yr) #870-895-3434

Viola Head Start (3 yr-5yr) #870-458-2016

Early Horizons Child Development Center #870-895-3222

Mammoth Spring Preschool #870-625-7213

Shalynn Daray Lane #870-994-2717

Happy Feet Learning Care #870-710-1768

### **Independence County Area Preschools**

Head Start (NADC) (3yr - 5 yr) #870-793-3234

Batesville Head Start East (3 yr-5yr) #870-698-0014

Batesville Head Start North/Early Head Start (6 weeks-5yr) #870-698-9127

Batesville Preschool (2 ½ yr - 5 yr) # 870-793-0630

Batesville Kid Care #870-251-5676

Bright Beginnings (6 weeks - 5 yr) #870-698-1211

Cave City ABC Preschool #870-283-5393

Helping Hand Child Care of Batesville #870-698-0543

Little Rascals (6 weeks - 3 yrs) #870-834-1009

New Beginnings (6 weeks - 3 yrs) #870-613-8159

Montessori Preschool (18 mths - 5 yrs) #870-698-1341

First Presbyterian Day School (3yrs - 5 yrs) #870-793-3272

Hope Lutheran School (pre-K & Kindergarten) #870-793-3078

Southside School District Preschool (18 mths- 5 yrs) #870-251-4025

Cedar Ridge Early Childhood Center #870-201-2577

Midland Preschool #870-345-2613

Midland Tiny Tots #870-345-8801

Southside School Child Care #870-251-2297

Sulphur Rock Head Start/Early Head Start #870-799-3415

The Community School Day Care #870-698-1529

Ascent Acquisition Corporation #870-793-3334

From the Beginnings Early Development Center #870-283-1034

Kids Corner Day Care #870-613-0836

Stars Academy #870-793-3200

**Izard County Area Preschools**

Calico Rock Head Start (3yr-5yr) #870-297-8853  
 Melbourne ABC Head Start (3yr-5yr) #870-368-5229  
 Bearkatz Academy #870-368-0380  
 Izard County Consolidated Preschool #870-322-8414  
 White River Preschool Inc. #870-297-8544  
 Mimi's Helping Hands #870-291-1661  
 Kids Business #870-291-2920  
 Kidspiration pediatric Therapy Services, Too #870-368-4586

**Sharp County Area Preschools**

Cave City Head Start (3yr-5yr) #870-283-5341  
 Evening Shade Head Start (3yr-5yr) #870-266-3460  
 Highland Head Start (3yr-5yr) #870-856-1190 or #870-856-2545  
 Cave City preschool #870-283-5393  
 Highland Early Head Start #870-856-2411  
 Highland Wee Care child Enrichment Center #870-856-5437  
 Highland Wee Care Day Care and Learning Center #870-856-4990  
 Hugs-N-Tugs Family Home Daycare #870-856-3562  
 From the Beginning #870-994-3103  
 Kiddo College #870-685-2131  
 Ms. Sonya's Discovery Farm #870-856-3012

**Stone County Area Preschools**

Little Fox Trotter Academy (3yr-5yr) #870-363-4747  
 Mountain View Head Start/Early Head Start (6 weeks-5yr) #870-269-4341  
 Mountain View Preschool (3yr-5yr) #870-269-9706  
 Tiger Cubs Day Care (3yr-5yr) #870-746-4303  
 UAMS Kids First Mountain View (6 weeks-5 years) #870-269-2110  
 Busy Bee Day Care #870-615-1636  
 Dinas Tots N Toddlers #870-269-3944  
 Little Learners Daycare #870-269-2414  
 Mountain View Tot School #501-994-7915  
 The Learning Tree #870-269-5655

**Therapeutic Preschools & Treatment Centers**

Community School, Inc. & Daycare (6 weeks- 5 yrs) #870-698-1529  
 S.T.A.R.S (Striving to Achieve Real Success) (6 wks -5 yrs) #870-793-3200  
 ASCENT ( 6 weeks - 5 yrs) #870-793-3334  
 Kids First @ Mountain View # 870-269-2110  
 From the Beginning @ Cave City # 870-283-5393  
     @ Ash Flat # 870-994-3103

**Special Needs & Speech/Language & Developmental Services**

Batesville Early Childhood Special Programs (3yrs-5yrs) #870-612-1716  
 North Central Arkansas Educational Service Center (3yr-5yr) #870-368-7955  
 Wrights and Associates (birth-3yrs) #870-698-9460  
 Network of Community Options (birth - 36 months) #870-615-5900  
 710 S. St. Louis St., Batesville, AR

UAMS-Kids First Clinic [www.arpediatrics.org/kidsfirst](http://www.arpediatrics.org/kidsfirst)  
 @ Mtn. View #870-269-2110  
 @ Little Rock #501-526-8700

James L. Dennis Developmental Center #501-364-1830  
 No limits Therapy @870-805-5793  
 Pediatric Therapy #870-569-8120  
 Therapy of North Central Arkansas Inc Pediatric # 870-793-2877

## CHILD CARE ASSISTANCE & LOCATION INFORMATION

### **Arkansas Department of Human Service (DHS)**

Low income families can receive free or reduced cost child care in licensed day care centers by applying for vouchers at their county DHS office. To Qualify: Parents must have a certain income, must work, participate in a training program, or be enrolled in school.

Fulton County, 222 Bryon Road, Salem, AR #870-895-3309  
 Independence County, 100 Weaver Ave, Batesville, AR #870-698-1876  
 IZARD County, 278 E. Main, Melbourne, AR #870-368-4318  
 Sharp County, 1467 Highway 62/412 Suite B, Cherokee Village, AR #870-856-1053  
 Stone County, 1821 East Main, Mountain View, AR #870-2694321

### **ChildCare Aware of Northcentral Arkansas #1-800-737-2237 or 870-793-5233**

ChildCare Aware helps parents locate child care. Licensed and registered child care providers are matched with each parent's needs according to the location and providers available. The referral service is free and serves Baxter, Cleburne, Conway, Faulkner, Fulton, Independence, IZARD, Jackson, Marion, Searcy, Sharp, Stone, Van Buren, and White Counties.

Website: [www.ccana.org](http://www.ccana.org)

## FUN EDUCATIONAL Pre-K WEBSITES & APPS - FREE

### **Counting- Sounds- Letter Recognition- Following Directions**

Sproutonline.com  
 PBSkids.org  
 Funbrain Jr.  
 Startfall  
 ABCYA.com



### **Listening to Stories-Free**

The Indianapolis Public Library Links  
 Storytime on line 100+ books  
<http://www.indypl.org/readytoread/?p=6150>  
 Story Apps for kids:  
<http://www.imcpl.org/readytoread/?p=6477>



## Medical Coverage

**ARKids First** #1-888-474-8275

Website: <http://www.arkidsfirst.com/home.htm>

**Medicaid:** (Eligibility Questions) #1-800-482-8988  
 (Services Covered) #1-800-482-5431  
 (Transportation) #1-888-987-1200  
 (Providers) # 1-800-482-5850

Website: <https://www.medicaid.state.ar.us/>

**Connect Care** #1-800-275-1131

Website: <http://www.connectcare.arkansas.gov/>



## YOUNG CHILDREN MEDICAL PROVIDERS

### **Pediatrician**

Melody Moody, M.D. #870-262-2200 \*accepts Medicaid

Robin Williams, M.D. # 870-698-9747 \*accepts Medicaid

### **Outpatient Therapy Clinics**

Health Resources of Arkansas # 870-406-5841

Integrated Services #870-248-1448

Methodist Family Health #870-932-8880

White River Health System Pros @ Batesville # 870-262-1271

@ Cherokee Village # 870-257-6040

@ Mountain View # 870-269-4361

### **Occupational Therapist**

Casey Connell, MS @ Batesville #870-793-1925

Erin Shirley @ Cave City #501-450-6214

Melanie Isaacs @ Ash Flat #870-994-2372

Alicia McBride @ Ash Flat #870-994-2231

Batesville Therapy, OT @ Batesville #870-612-7200

### **Physical Therapist**

Hoskinds Physical Therapy, PLLc #501-454-4145

Betty Bradley @ Bateville #870-612-7200

Sheri Lewis @ Vilonia #870-796-4873  
 Stone County Medical Center Physical Therapy #870-269-2871

### **Pediatric Mental Health/Counseling**

Batesville School District School Based Mental Health #870-612-1716  
 Life Strategies #870-793-3199  
 Methodist Family Health # 501-661-0720  
 Woods & Associates Counseling Clinic #870-793-6774

### **Pediatric Psychiatry**

Atif Akhtar, M.D. #501-336-8300

### **Pediatric Dermatologist**

Patrick Hatfield, MD #870-698-9100

### **Pediatric Optometrist**

Dr. James O. Davis, O.D. #870-793-4400 \*accepts Medicaid  
 Dr. Dale Ladd # 870-793-6857 \*accepts Medicaid  
 Dr. Sam Cooke #870-793-4681 \*accepts Medicaid  
 Dr. Chris Deitrick OD #870-269-3610 \*accepts Medicaid  
 Dr. Hayden Sowers #870-793-4681

### **Pediatric Dentist**

Dr. Bradley Slaughter #870-793-7520 \*accepts Medicaid  
 DR. Paul Hance #870-698-2121 \*accepts Medicaid  
 Dr. Doug Matthews #870-793-6710 \*accepts Medicaid  
 Dr. Bill Shelton #870-793-7529 \*accepts Medicaid  
 Dr. Chris Beller #870-698-1837 \*accepts Medicaid  
 Dr. Ralph Teed #870-698-8555 \*accepts Medicaid  
 Isbell Family Dentistry #870-269-3828 \*accepts Medicaid

### **Ear, Nose, and Throat**

Dr. Todd Rumans #870-698-1846 \*accepts Medicaid  
 Dr. Lawton # 870-698-1846 \*accepts Medicaid

### **Family Practice**

Dr. JR Baker # 870-793-5356 \*accepts Medicaid  
 Dr. Greg Neaville # 870-698-1635 \*accepts Medicaid  
 Dr. Julia Allen # 870-793-1112 \*accepts Medicaid  
 Dr. Julia Roulier #870-793-1112 \*accepts Medicaid  
 Dr. Michelle Bishop #870-269-4144 \*accepts Medicaid  
 Dr. James Zini #870-269-3838 \*accepts Medicaid  
 Dr. Dawson Irvin #870-269-9800 \*accepts Medicaid  
 Dr. Ron Simpson #870-269-4144 \*accepts Medicaid  
 Dr. Andy Subramaniam # 870-269-7777 \*accepts Medicaid  
 Dr. Tim Young #870-257-6000 195 Hospital Dr Ste B, Cherokee Village  
 Hardy Medical Clinic #870-257-6060 195 Hospital Dr Ste A, Cherokee Village  
 Family Medical Clinic #870-856-5620 1995 Hwy 62/412, Hardy  
 Access Medical #870-856-2100 101 Main Street, Hardy  
 Access Medical #870-994-7301 49 Hwy 62/412, Ash Flat  
 1<sup>st</sup> Choice Health Care #870-994-2202 308 Hwy 62 W, Ash Flat



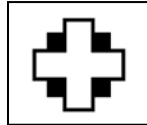
**Orthopedic**

Dr. Charles Varela #870-269-8300 #800-790-1884  
 Dr. John Akins #870-269-8300

**Hospitals**

**White River Medical Center** # 870-262-1200  
**Stone County Medical Center** # 870-269-4361

**Arkansas Children's Hospital** #501-364-1100

**Clinics**

**Independence County Health Unit** # 870-793-8848

120 Weaver Ave, Batesville, AR

Services: Health Screening, Immunizations, Family Planning, Maternity Services, Nutrition Counseling, HIV testing & Counseling, STD Screening & Treatment, and Food Vouchers for Women, Infants and Children (WIC)

**ARcare**

Medical Clinic  
 4100 Harrison St #870-307-0001

Medical Clinic  
 110 Camp Tahkodah Rd #870-569-4934

**Sherwood Urgent Care**

Medical Clinic #870-793-5800  
 1547 Harrison Street

**Mountain View Family Practice Clinic**

Medical Clinic #870-269-4144  
 19797 Highway 5

**Stone County Primary Care Clinic**

Medical Clinic #870-269-6495

**Stone County Pain Clinic**

Medical Clinic #870-269-3997  
 318A E. Main Street

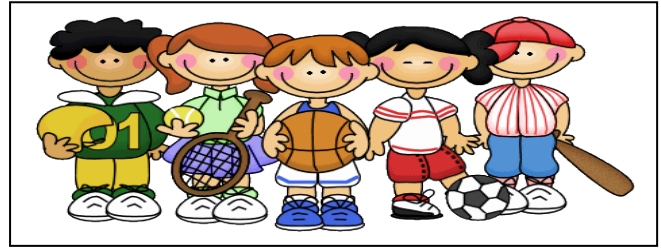
**Taylor Hearing Center**

Audiologists & Audioprosthologists #870-269-6996 #1-800-690-3896  
 307 Sylamore Avenue Ste-E, Mountain View, Ar



## EARLY YEARS COMMUNITY ACTIVITIES & GROUPS

**Batesville Parks & Recreation** #870-698-2427  
 ICYAA Soccer (4yrs - 15 yrs)  
 ICYAA Baseball (5yrs-14yrs)  
 ICYAA Softball (5yrs-14yrs)  
 Batesville Torpedoes Aquatic Club (5yrs-18 yrs)



**Independence County Library** # 870-793-8814  
 Storytime for young children, free book checkouts, computer access

**Stone County Library** # 870-269-3100  
 Storytime for young children, free book checkouts, computer access

**Sharp County Library** # 870-856-3934 Hardy; #870-966-4227 Williford; #870-994-2857 Ash Flat  
 Storytime for young children, free book checkouts, computer access

**Old Independence Regional Museum** #870-793-2121  
 Family days, hands on activities, tours

**MOMS Club of Batesville** # 870-698-9309

**Big Brothers Big Sisters of Independence County** #870-612-8888

This organization helps children reach their potential through professionally supported, one-to-one relationships with mentors that have a measurable impact on youth. Their vision to successfully mentor relationships for all children who need and want them, contributing to brighter futures, better schools, and stronger communities.

**Batesville Community Center and Aquatics** # 870-698-2427  
 Website: BatesvilleParks.com

**4-H/Youth** A youth development program to provide learning and demonstration opportunities. 4 years & up  
 Fulton County # 870-895-3301  
 Independence County #870-793-8840  
 IZARD County #870-368-4293  
 Sharp County #870-994-7363  
 Stone County # 870-269-3336

**Boy Scouts** #501-664-4780

The Boy Scouts of America is one of the nation's largest and most prominent values-based youth development organizations. The BSA provides a program for young people that builds character, trains them in the responsibilities of participating citizenship, and develops personal fitness.

**Girl Scouts** # 1-800-632-6894

Girl Scouts of the USA is the world's preeminent organization dedicated solely to girls – all girls – where, in an accepting and nurturing environment, girls build character and skills for success in the real world. In partnership with committed adult volunteers, girls develop qualities that will serve them all their lives, like

leadership, strong values, social conscience, and conviction about their own potential and self-worth.



## ADULT EDUCATION

### **Lyon College**

Enrollment Service #1-800-423-2542

\*Four year degree programs

Website: Lyon.edu

### **Ozarka College**

Admissions Office #870-368-2013

\*Adult Education \*AA degree \*Technical Training

Website: Ozarka.edu

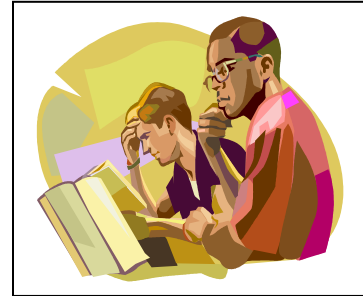
Melbourne Campus: 218 College Dr #870-368-7371

Ash Flat Campus: 64 College Dr #870-994-7273

Mammoth Spring: 520 Archer Ave #870-625-0411

### **Ozark Foothills Literacy Project** #870-793-5912

608 Water St, Batesville, AR 72501



### **University of Arkansas Division of Agriculture Cooperative Extension Service** # 870-793-8840

Offers childcare training, a self study childcare training program, grandparents training, nutrition information and training to low income families.

### **UACCB -University of Arkansas Community College Batesville**

Admissions Office #870-612-2139

\*GED preparation courses

\*Adult tutoring in reading, spelling, math

\*Continuing Education Classes

\*AA Degree

Website: UACCB.edu

\*Career Pathways

\*ESL- English as a Second Language

\*Vocational & Technical Training

\*Certificate programs

### **WIOA - Workforce Innovation & Opportunity Act**

Arkansas Information #1-855-225-4440

White River Area at Batesville # 870-793-5233

\* Career Readiness Certification

\*Tutoring

Website: DWS.Arkansas.gov

\*Job training

\*GED preparation courses

### **What is GED?**

Earning the GED diploma can be one of the first steps in helping yourself reach both career and educational goals. This credential is recognized by employers and colleges nationwide. Anyone at least 18 years old and not enrolled in high school can enroll in UACCB GED classes without restrictions. Sixteen and seventeen year old students must meet certain requirements and should contact the Adult Education Department to learn how

to qualify. Upon enrollment, the student is given a series of tests to determine their status and to move forward through the class

### What is ESL?

ESL stands for English as a Second Language. All adult education classes are offered free to the public. The only real eligibility requirement is that students must be at least 18 years old. Sixteen and seventeen year old students can enroll in classes only if they are working at the 8<sup>th</sup> grade level in reading, writing, and math and if they have permission from their referring school district. Classes are arranged with open entry and open exit which means we enroll students throughout the school year and not just in August or January

## EMPLOYMENT

**A.I.D. Temporary Services, INC** # 870-698-0801  
355 South Broad Street, Batesville, AR  
Website: aidtemps.com

**Ambassador Personnel** #870-698-9400  
1614 Harrison Street, Batesville, AR  
Website: teamambassador.com

**Onin Staffing** #870-569-4960  
249 Eagle Mountain Blvd. #100, Batesville, AR  
Website: Oninstaffing.com

**Synergy HR, LLC** #870-569-4912  
3240 Harrison St., Batesville, AR  
Website: Synergy-hr.Org

**StaffMark** #870-698-2800 1  
Eagle Mtn. Blvd. Suite#13, Batesville, AR  
Website: Staffmark.com

**Employment Security Division (ESD)** #870-793-4156  
Workforce Service Department  
396 Barnett Drive, Batesville, AR TANF (Temporary Assistance for Needy Families) #1-855-225-4440  
Website: DWS.Arkansas.gov

**ESA Staffing & Screening** #501-206-0081  
102 S. 5<sup>th</sup> Street, Heber Springs, AR  
Website: ESA-staffing.com

**Arkansas Rehabilitation Services** #1-800-330-0632

Persons with disabilities are empowered to become employed. Services include transition services for students finishing high school, services for those with special communications needs, specialized assessment and treatment, and vocational training at the Hot Springs Rehabilitation Center's Arkansas Career Training Institute. To determine if you are eligible, call the office nearest to you and set up an appointment and interview with a counselor.

Website: [www.arsinfo.org](http://www.arsinfo.org)

**White River Specialized Industries** # 870-793-6943



1550 Cottonwood, Batesville, AR

Provides a wide variety of programs to adults with disabilities including adult development, work activity, assessment / work adjustment, sheltered employment, and job placement in the community

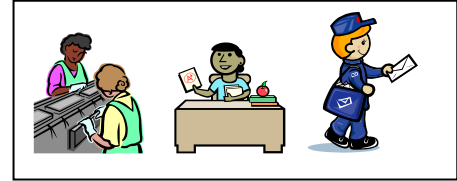
### **WIOA - Workforce Innovation & Opportunity Act**

Provides employment and unemployment service assistance. Computer access is available for the public to aid in completing online applications or making resumes.

Arkansas Information #1-855-225-4440

White River Area at Batesville # 870-793-5233

Website: [DWS.Arkansas.gov](http://DWS.Arkansas.gov)



## **ADULT COMMUNITY CLUBS & ORGANIZATIONS**

- **AARP:** 870-266-3661
- **American Legion Post 114:** 870-793-9720
- **American Legion Post 43:** 870-269-4658
- **American Legion Post 336:** 870-966-7447 Williford
- **Area 16 Special Olympics:** 870-307-0383
- **Arkansas Job Corps:** 870-733-5627
- **Batesville Area Radio Club:** 870-793-6431
- **Batesville Genealogical Society:** 870-793-5738
- **Batesville Kiwanis Club:** 870-793-2266 or [batesvillekiwanis.org](http://batesvillekiwanis.org)
- **Batesville Rotary Club:** [batesvillerotary.org](http://batesvillerotary.org)
- **Bereavement Support Group:** 870-612-0685
- **Business and Professional Women's Association:** 870-793-4276
- **Daughters of the American Colonists:** 870-612-5246
- **Daughters on the American Revolution:** 870-368-7257
- **Disabled American Veterans and Auxiliary #32:** 870-251-2854
- **Eastern Star #91:** 870-793-5077
- **Humane Society of Independence County:** 870-793-0090
- **Humane Society of Stone County:** 870-269-5200
- **Independence County Cooperative Extension Service:** 870-793-8840
- **Independence County Hospice:** 870-793-8852

- MOMS of Military Prayer and Support Group: 870-251-2100
- Mountain View Art Guild: 870-269-9655
- North Arkansas Dance Theater: 870-698-9098
- North Arkansas Dance Academy 870-269-4555
- Widowed Persons Support Group: 870-793-2439



## ADULT & FAMILY COUNSELING

### **Families, Inc. Counseling Therapy Services**

Provides individual and family mental health counseling, Fee is based on income. Counselors are able to work with you in your home.

Phone: #870-994-7060

Address: 75 Hwy 62/41 Suite J, Ash Flat, AR 72513

### **Health Resources of Arkansas**

Provides a comprehensive system of care to meet the behavioral health needs of the communities they serve.

Phone: #870-793-8900

Address: 25 Gap Rd. Batesville, AR 72501

Website: [www.healthresourcesofarkansas.com](http://www.healthresourcesofarkansas.com)

### **Life Strategies Counseling.**

Services are offered for a wide variety of mental health concerns, including depression, anxiety, stress, childhood abuse and trauma, family and relationship issues, grief and loss, eating disorders, and addiction recovery.

Phone: #870-793-3199

Address: 70 Batesville Blvd. #C, Batesville, AR 72501

Website: [LSClhelp.com](http://LSClhelp.com)

### **Nicola M. Penn, LPC**

Phone: #870-793-7162

Address: 548 N. Central Avenue, Batesville, AR 72501

### **Arkansas Mental Health Services #1-877-277-0007**

### **Methodist Family Counseling #870-569-4890**

500 E Main St Ste 310, Batesville, AR 72501

**Rivendell**

400 Harrison St. #107, Batesville, Ar.72501 # 1-800-264-5640 or #870-793-6774

**The Pointe**

#870-793-6774

400 Harrison Street – Batesville

**Batesville Behavioral Health Clinic**

#870-793-8925

**EMERGENCY SERVICES**

**Poison Hotline**

#1-800-376-4766 or 1-800-222-1222

**Emergency Services Office**

#870-793-8816 Batesville

**Federal Emergency Management Agency (FEMA)**

#1-800-621-FEMA, TTY 1-800-462-7585

**American Red Cross**

# -800-364-7524

**Ambulance Services**



Arkansas Emergency 911

Non-Emergency - Vita-Link EMS #1-877-488-4911

Spring River Paramedic Ambulance Service, INC # 870-257-2044

**Sheriff Office**



- Fulton County #870-895-2601
- Izard County #870-368-4203
- Sharp County #870-994-7329
- Stone County #870-269-3825
- Independence County #870-793-8838
- Criminal Investigations Division #870-793-8878
- Dispatch #870-698-2436



**Police Department**

- Batesville #870-569-8111  
300 S. Central Ave.
- Hardy #870-856-2136
- Highland #870-856-6314
- Mountain View #870-269-4211

## Fire Departments



- Allison-Sylamore #870-269-8267 (153 Cook Road)
- Batesville #870-698-2439 (393 E. College St)
- Cave City #870-283-5537 (208 N. Main Street)
- Charlotte # 870-799-3676 (7185 White Dr.)
- Cushman Volunteer # 870-793-2135 (P.O. Box 367)
- Dodd Mountain #870-269-4556
- Floral Volunteer #501-206-5061 (3760 Floral)
- Fox #870-363-4544 (13259 Highway 263)
- Hardy #870-856-4811
- Highland #870-856-2622
- Iron Mountain #870-269-6189 (Hwy 5 S)
- Oil Trough Volunteer #870-264-3323 (430 Moore St.)
- Union Hill /Thida Volunteer #870-264-3737 (1825 Thida Rd)
- Cord Volunteer #870-799-8766 (9450 White Dr.) .
- Desha Volunteer #870-698-0254 (15 Gainer Ferry Rd)
- Pleasant Grove #870-652-3552
- Pleasant Plains Volunteer #501-345-2262 (150 E. East Wood Dr. E)
- Southside # 870-251-4233 (1563 Batesville Blvd, Batesville)
- Sydney Volunteer #870-283-5406 (245 AR-58, Cave City)

## ABUSE & NEGLECT

### Hotline

Child Abuse & Neglect #1-800-482-5964  
 Adult Abuse & Neglect #1-800-482-8049  
 Family Violence Prevention #1-800-332-4443



### Battered Women Shelter

Shelter for women and children. Boys must be under 18 yrs. Maximum of 30 day stay. Referrals for jobs, food,, and other needs. Counseling on family violence is provided.

Independence County - Batesville

Phone: #870-793-4011 or #870-793-8111 (24 hrs)

Izard County - Melbourne

Phone: #870-258-7777 or #870-368-3222 (24 hrs)

Sharp County – Highland – SAC

Phone: 870-856-3305

Stone County-Mountain View

Phone: #870-269-4668 or #800-894-8821

**Sexual Assault Nurse Examiner** #870-793-1240



## ADDICTION SUPPORT

**Believers Community Church** #870-793-8365  
Celebrate Recovery support group meetings  
3645 N. St. Louis, Batesville, AR

**John 3:16** #870-799-2525  
A spiritual camp for men with drug problems  
75 Holmes Road, Charlotte, AR 72522

**NADC Substance Abuse Treatment Program** #870-793-2221 Batesville, AR  
National Treatment Network, Serving Batesville Area Drug/Alcohol Rehab Phone: #855-237-5937

**Ester House Project New Start** #870-523-8413 Newport, AR  
Help for women with drug problems

**Butterfly Ranch** #870-485-2000 Swifton, AR  
Help for women with drug problems

**The Watershed** #888-411-0338  
Serving the Batesville area

**Alcoholics Anonymous / Narcotics Anonymous** #870-793-3857

**Crystal Meth Anonymous** #870-612-7602 or 870-251-2421 or 855-638-4373

## LEGAL SERVICES



### **Legal Aid of Arkansas**

Legal Aid provides legal services for low income families. No attorney fee, client may have to pay court filing cost. Eligibility is based on income.

Phone: #1-800-477-9892

Location: Jonesboro, AR

**Child Support Enforcement** #870-698-2752





## FINANCIAL ASSISTANCE

**USA Government National Contact Center for Benefits** #1-800-FED-INFO (1-800-333-4636),  
Website: <https://www.benefits.gov/help/contact-us>

**TANF - Temporary Assistance for Needy Families** #870-698-1876 or #1-800-482-8988  
Department of Human Services  
100 Weaver, Batesville, AR  
Website: <http://www.tanf.us/state/arkansas>

**Farm Services Agency (FSA) (Conservation District)** #870-793-4164  
Provides funding and supplies for Forestry Incentives, Rural Clean Water, Emergency Conservation, and Water Bank. Must be land owner or producer on a farm.

**Social Security Administration** #1-800-772-1213  
Provides financial assistance including: Medicare, Social Security Benefits, Supplemental Security Income. Assists in filing claims.  
Batesville Office: 1 866-816-5651, 151 Dry Kiln Rd.



## VISION & GLASSES ASSISTANCE

**The Brandon Burlsworth Foundation** #870-698-2107  
(Free Eye Glass Program through Wal-Mart)  
\*Families income less than \$50000 and not be covered by personal insurance, Medicaid, or ARKids

**Lions Club** - Website: <http://www.lionsclubs.org/EN/index.php>



## PRESCRIPTION DRUG ASSISTANCE

**Arkansas Health Care Access Foundation** #1-800-950-8233 or 501-221-3033

**Arkansas Drug Card** Website: <http://www.arkansasdrugcard.com/index.php>

**Arkansas Medicaid** #501-682-8501  
Website: <https://www.medicaid.state.ar.us/>

**Arkansas Health Care Access Foundation** #501-221-3033

Website: [www.AHCAFR.com](http://www.AHCAFR.com)

**Arkansas AIDS Drug Assistance Program** #1-800-232-4636

Website: <http://www.rxresource.org/prescription-assistance/arkansas-aids-drug-assistance-program.html>

**ARKids First** #1-888-474-8275

Website: <http://arkidsfirst.com/home.htm>



## PREGNANCY ASSISTANCE & INFORMATION

**Alpha Pregnancy Center** # 870-698-1008 or [www.alphapregnancy.org](http://www.alphapregnancy.org)

Provides confidential support, parenting classes, free pregnancy testing and peer counselors

**My Choice Clinic - Batesville, Arkansas Location** #870-613-7860 or 1-800-395-4357

250 South Broad Street, Batesville, AR

**Arkansas Department of Health** #870-793-8848

120 Weaver Ave, Batesville, AR 72501

Services: Health Screening, Immunizations, Family Planning, Maternity Services, Nutrition Counseling, HIV testing & Counseling, STD Screening & Treatment, and Food Vouchers for Women, Infants, and Children (WIC)

**New Beginnings Pregnancy Help Center:** #870-994-5433

23 W. Main, Ash Flat, AR 72513

Provides confidential support, parenting classes, free pregnancy testing and peer counselors

**Stone County Abuse Prevention:** #870-269-9941

PO BOX 689, Mountain View, AR 72560

## ELDERLY ASSISTANCE & ACTIVITIES



**White River Area Agency on Aging** #870-612-3000 or 1-800-382-3205

Provides In-Home services, Personal Care, Respite, Case Management, and Personal Emergency, Response System. Funding by: SSI Medicaid, Elder Choices Medicaid, AR SENIORS Medicaid, Private Pay.

**Independence Senior Citizens Program** #870-793-8821

1590 E. College, Batesville, AR

**Foster Grandparent Program** #870-612-3039 or 1-800-382-3205

Foster grandparents provide one-on-one attention to children with special needs. They tutor and help develop learning skills, work with abused and neglected children, mentor troubled teenagers, and care for children with physical disabilities

**Arkansas Department of Human Services (DHS) #870-698-1876**

100 Weaver Ave, Batesville, AR

Services: Transportation, meals, and employment.

**Batesville Housing Authority #870-793-9104**

A person must be 62 years or older or totally disabled as social security defines eligible. Costs no more than 30% of adjusted income. Offers 3 different housing locations.

**Meals on Wheels #870-793-8821**

**Independence County Veterans Service # 870-793-8812**

110 S. Broad St., Batesville, AR

**Independence County Home Health Care #870-793-8852**

**FREE MEALS**

**Summer Food Program**

Free breakfast & lunch for children 18 yrs and under. Adults eat @low price.

Batesville School District #870-793-6831 (various campuses)

Southside School District #870-251-3316



**First United Methodist Church (FUMC) #870-793-3803**

Free Community Pancake Breakfast Every Saturday Morning 8:30am

615 East Main St., Batesville, AR

**Central Avenue Methodist Church #870-793-2365**

Free meal every Sunday 9:00 am

1205 N. Central Ave., Batesville, AR

**St. Paul's Episcopal Church #870-793-2203**

Free Soup Dinner every Wednesday 5:30 pm

424 E. Main St., Batesville, AR



**FOOD ASSISTANCE**

**SNAP - Supplemental Nutrition Assistance Program # 870-698-1876**

Arkansas Department of Human Services

100 Weaver Road, Batesville, AR

Report Lost Card #1-800-977-9999

**Women, Infants, and Children (WIC)** #870-793-8848 or # 1-501-661-2473

Website: [wic.program@arkansas.gov](mailto:wic.program@arkansas.gov)  
 Independence County Health Unit  
 120 Weaver Chapel Road, Batesville, AR  
 Sharp County Health Unit  
 724 Ash Flat Drive, Ash Flat  
 Phone: 870-994-7364

**USDA Food Distribution Programs** #501-371-1400

CSFP - Commodity Supplemental Food Program  
 TEFAP - The Emergency Food Assistance Program  
 FMNP - Farmers' Market Nutrition Program  
 SFMNP - Senior Farmers' Market Nutrition Program  
 Website: [www.fns.usda.gov](http://www.fns.usda.gov)  
 Arkansas Department of Human Services, Little Rock, AR

**Batesville School District Food Pantry** #870-793-0627

Parents as Teachers (P.A.T.)  
 1900 Lyon Street, Batesville, AR

**Batesville Help & Hope** #870-793-9181

2622 E. Main St., Batesville, AR

**NADC- Northcentral Arkansas Developmental Council** #870-793-5765 ext.229 or 230

550 S. 9<sup>th</sup> St, Batesville, AR

**North Heights Church of Christ Community Food Pantry** # 870-698-1441

Every Wednesday, 6:30 pm, 200 Warrior Rd (One time monthly, please)

**Angel Food Ministries** #870-251-1918 or 870-307-2416

Provides grocery relief by distributing discounted food to families. Food stamps are accepted.  
 Location: Batesville Fellowship Baptist Church  
 1003 Batesville Blvd.

**Christmas Brings Hope** #870-793-6831

**American Red Cross** #1-800-364-7524

**Southside Food Pantry** #870-251-2341

70 Scott Drive Batesville, AR

**Dorcus Food Pantry** #870-269-4101

310 School Avenue, Mountain View AR

**Mission of Hope Pantry** #870-856-5511

3968 Hwy 62/412, Hardy  
 Open Thursday 9 – 12

**Ash Flat Church of Christ** #870-994-2430

560 Ash Flat Dr, Ash Flat  
 Open Wednesday 1 – 4

**First Baptist Church**

311 Crooked Rd, Ash Flat  
Open 3rd Saturday of Month 10 – 12

**New Song Baptist Church** #870-966-4300

423 College St, Williford  
Open 3rd Friday of Month

**Spring River Presbyterian Church** #870-856-3426

151 Waheten Hill Rd, Hardy  
Open Tuesday 9 – 1 and 1<sup>st</sup> Monday of Month 3 – 5

**CLOTHING ASSISTANCE****Batesville Help & Hope** #870-793-9181

2622 E. Main St., Batesville, AR

**Batesville School District Clothes Closet** #870-793-0627

Parents as Teachers (P.A.T.)  
1900 Lyon Street, Batesville, AR

**Dorcas House**#870-269-4101

310 School Avenue, Mountain View AR

**VETERNS ASSISTANCE & MILITARY SUPPORT****Veterans Administration** #1-800-827-2033

Provides assistance in obtaining compensation, pensions, hospitalization, loans, and educational benefits for veterans, and their widows and children. Free rides for Veterans to VA hospital in Little Rock, call your county office for scheduling. Volunteer drivers are needed and drivers will receive a free lunch.

**Independence County** #870-793-8812

110 South Broad Street, Batesville, AR

**American Legion Post 114** # 870-793-9720**Bereavement Support Group** # 870-612-0685**Daughters of the American Colonists** # 870-612-5246

**Daughters on the American Revolution** # 870-368-7257

**Disabled American Veterans and Auxiliary #32** # 870-251-2854

**Eastern Star #91** #870-793-5077

**MOMS of Military Prayer and Support Group** #870-251-2100

**Widowed Persons Support Group** #870-793-2439



**White River Regional Housing Authority (HUD)** # 870-793-5588

Offered to low income families based on household size.

Batesville #870-793-5588 @ 351 W. Ross Street

Melbourne #870-368-5200 @ 1327 E. Main Street

Website: <http://www.wrrha.com/>

**Battered Women's Shelter (Safe Haven)** # 870-793-8111

**Independence Inn** #870-793-2311

Provides housing for the mentally ill. The Day Treatment program offers rehabilitation and services for people who meet the eligibility qualifications. Acceptance into the program is through referrals by hospitals or therapists.

**River Giver** # 870-805-0798 or 870-291-1713

**Huskey Rentals** #870-793-4712

Eligibility based on income and household size.

**Batesville Housing Authority** #870-793-9104

A person must be 62 years or older or totally disabled as social security defines eligible. Costs no more than 30% of adjusted income. Offers 3 different housing locations.

**Project New Start- Newport** #870-523-8413

Project New Start offers homeless shelters for men and women who have no place to go. We help people look for jobs, find housing, and go to appointments.

**American Red Cross** # 501-268-2691- Fire or flood Emergency shelter

**Habitat for Humanity of Independence County** #870-793-1999

85 Batesville Blvd., Batesville, AR

### **Rural Development**

Provides loans for repairs and to buy or build homes. Eligibility is based on income and need for housing.

**Independence, Jackson, Cleburne County** #870-793-4164 ext .4  
490 E. College, Room 226A, Batesville, AR

**Fulton, Izard, Sharp, Stone** #870-741-8600 ext. 4  
Harrison, AR



### **WATER & UTILITIES**

**Batesville Water Utilities** #870-698-2415  
Website: <http://www.cityofbatesville.com/city-departments/utilities/>

**Highland Water Authority** #870-856-2221

**Hardy Water Department** #870-856-3811

**Ash Flat Water** #870-994-2885

**Southside Public Water Authority** # 870-251-2508  
Website: <http://spwa.org/>

**Bethesda Water Association** #870-793-7887

**Cave City Water and Sewer Department** #870-283-5563

**Mountain View Water and Sewer Department** #870-269-3293

**Newark Water and Sewer** #870-799-3911

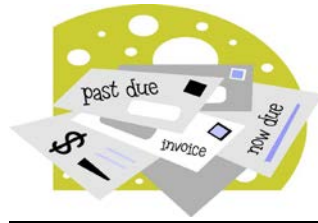
**Rock-Moore Water:** #870-793-7236

**Dota Water** # 870-793-6592

**Entergy** # 1-800-368-3749

**Center Point Energy (ARKLA)** #1-800-992-7552 or 870-793-2594

**AT&T** #1-800-222-0300



## UTILITY ASSISTANCE

**NADC (Assistance w/ Utilities)** # 870-793-5765 Extension 229 or 230

**Low Income Home Energy Assistance Program** #1-870-793-3234

**Weatherization Assistance Program** #1-501-682-8722

**SBC Life-Line** #1-800-464-7928

**North Sharp County Ministerial Alliance** #870-856-3426  
Spring River Presbyterian Church

## FAMILY SERVICES



**Parents as Teachers, Grandparents as Parents, and Beginning Steps:** 870-793-0627

The program utilizes the award-winning curriculum "Born to Learn". Services are provided to children and their families throughout Independence County free of charge. You are your child's first and most important teacher.

**Child Care Aware:** 870-793-5233 or 1-800-737-2237

A network of services dedicated to enhancing the quality and availability of child care; advocating for children; and providing information, education guidance and support to parents, providers, employers, and the community. They help parents locate child care in eight counties of North Central Arkansas. They profile licensed and registered child care facilities and match the parent's needs with a provider. This service is free of charge.

**Success by Six:** 870-793-5991

Activities focus on parenting education, toy making, child development, family literacy, arts and crafts, community mobilization and overall family support. Success by Six envisions a countywide early childhood collaborative that will succeed in assuring children are healthy and ready for first grade.

**Arkansas Sheriffs Youth Ranch:** 870-793-6841

The Ranch's program is centered on the belief that abused, neglected, or abandoned children – all children for that matter – must establish a nurturing relationship with at least one caring adult to become a healthy, productive adult themselves. Children admitted to our residential program may remain through post-employment. Our program employs several fundamentals we count as necessary for children to reach their full potential. Among our components are: making time for the children in our charge, ensuring that each one has several caring adult role models, giving frequent, tangible, and unconditional expressions of love and support, setting clear rules and limits, providing structured activities such as household chores, horseback riding, camping, vacations, picnics, Scouting and summer sports programs, and providing direct rewards for achievements. Perhaps most importantly, we strive to give children a sense of belonging – awareness that they are part of a whole and that they have value.

**United Way:** 870-793-5765



A referral service for various agencies in the county. United Way also provides food, housing, and medical assistance for persons who have found themselves in an emergency situation.

**Lyon College Upward Bound Program:** 870-307-7000

The Upward Bound Math-Science program serves students from families where neither parent has achieved a bachelor's degree or who qualify as low-income. The purpose of the program is to help students achieve the academic preparation, the motivation and the confidence needed to complete high school and to successfully pursue postsecondary programs, especially in the areas of mathematics and science. Students participate in mentored research in a math or science related subject, take field trips and select from a variety of classes and activities to strengthen their preparation for college.

**Lyon College APPLE Project:** 870-307-7000

The APPLE (Accelerated Program of Personalized Learning and Enrichment) Project Upward Bound Program provides academic and personal support to participants in their preparation for college entrance. The program provides opportunities for participants to succeed in their precollege performance and ultimately in their higher education pursuits. The APPLE Project serves high school students from low-income families and from families in which neither parent holds a bachelor's degree. The goal of the APPLE Project is to increase the rate at which participants complete secondary education and enroll in and graduate from institutions of postsecondary education. The Project hosts both an Academic Session and a residential Summer Session for eligible participants from target schools in Independence, Jackson, Sharp, and Stone counties.

## GOVERNMENT SERVICES



- **United States**
  - **USDA Service Center:** 870-793-4164
  - **District Judge:** 870-793-9236
  - **Social Security Administration:** 870-793-3488 or 870-612-5459 or 1-800-772-1213
  - **Cooperative Extension Service:** 870-793-8840 (Independence County)
  - **Cooperative Extension Service:** 870-269-3336 (Stone County)
  
- **State of Arkansas**
  - **Revenue Office:** 870-793-7441
  - **Highway Transportation:** 870-251-2374
  - **Community Punishment Probation Service:** 870-793-7965
  - **Department of Health:** 870-251-2848
  - **Child Support:** 870-698-2752
  - **Employment Security:** 870-793-4156
  - **Department of Human Services:** 870-698-1876
  
- **Independence County**
  - **Chancery Judge (16<sup>th</sup> Judicial District):** 870-793-8890
  - **Circuit Juvenile Judge:** 870-793-8866
  - **Circuit and Chancery Clerk:** 870-793-8833
  - **Circuit and Chancery Fines:** 870-793-8851
  - **Circuit Court Reporter:** 870-793-8813
  - **Circuit Judge:** 870-793-8805
  - **County Clerk:** 870-793-8828
  - **County Assessor:** 870-793-8842
  - **County Tax Collector:** 870-793-8823
  - **County Extension Office:** 870-793-8840
  - **County Health Office:** 870-793-8848
  - **County Judge's Office:** 870-793-8800
  - **County Treasurer:** 870-793-8899

- Emergency Services Office: 870-793-8816
- Detention Facility: 870-793-6880
- District County Clerk: 870-793-8817
- Drug Task Force 16<sup>th</sup> Judicial: 870-793-3622
- Home Health Care: 870-793-8852
- Jail: 870-612-6880
- Juvenile Detention Center: 870-612-6814
- Juvenile Drug Court: 870-612-6833
- Juvenile Intake and Probation: 870-793-8809
- Prosecuting Attorney: 870-793-8825
- Recycling Center: 870-793-8892
- Senior Citizens Program: 870-793-8821
- Veterans Service: 870-793-8812
- White River Planning and Development: 870-793-5233
  - The primary emphasis has been to preserve and improve the quality of life within the White River area, and the direction of district activity continues to address economic development and community development while maintaining the original concept of regional cooperation and coordination and efficient use of resources.
    - Solid Waste- Recycling and Solid Waste Management Programs
    - Government and Transportation Planning - Planning & Zoning Activities for Cities and Counties
    - Community Development - Various State – and Federally – Funded Community Improvement Activities
- Stone County
  - Chancery Judge (16<sup>th</sup> Judicial District): 870-793-8890
  - Circuit Clerk: 870-269-3271
  - Circuit Judge: 870-269-8989
  - County Clerk: 870-269-3271
  - County Assessor: 870-269-3524
  - County Tax Collector: 870-269-2211
  - County Extension Office: 870-269-3336
  - County Health Office: 870-269-3308
  - County Judge's Office: 870-269-3351
  - County Treasurer: 870-269-8426
  - Emergency Services Office: 870-269-6611
  - Detention Facility: 870-269-3825
  - Drug Task Force 16<sup>th</sup> Judicial: 870-793-3622
  - Home Health Care: 870-269-2598
  - Jail: 870-269-3825
  - Juvenile Intake and Probation: 870-269-5576
  - Recycling Center: 870-269-5081
  - Senior Citizens Program: 870-269-3101
  - Veterans Service: 870-269-4277
  - Post Office 870-269-3520



**TRANSITIONING to KINDERGARTEN**  
 Common Concerns of Parents  
 By Pat Sanders



## School Choice

Arkansas allows students to attend the school in the district of their choice only if the paperwork is submitted to both the resident school and the school they want to attend by the state deadline of May 1<sup>st</sup>.

The form may be picked up at the superintendent's office. The chosen school is not obligated to bus your child from his/her resident. You may need to get your child to a local bus stop.

The Arkansas School Choice form does not need to be filed if you will attend school in the district you reside.

## Registration

Arkansas law requires a student to be 5 years old by August 1 of the current school year.

The Batesville School District has four kindergarten campuses. Applications for campus choice are accepted in late February or early March and must be taken or mailed to the Superintendent's office at 955 Water Street, Batesville, AR 72501. The application is passed out at local preschools and can also be found on line. In April, a letter is mailed to the child's residence stating which Batesville campus he/she was assigned to and the date on which you will need to take registration documents to the assigned campus.

Other school districts usually have Kindergarten registration in late spring. Contact your local school for more information. Registering your child in the spring allows the school to plan for the fall. They can determine how many classrooms will be needed, assign teachers, enter the child's information into the system, and have your child's name in the room making him/her feel more welcome.

## Documents for Registration

Take the following items with you when you register:

- 1) Social Security Card
- 2) Birth Certificate
- 3) Immunization/Shot Record
- 4) Physical from the Doctor
- 5) Know the phone number of an emergency contact
- 5) Possibly \*Medicaid card if receiving special services or counseling
- 6) Possibly \* Proof of income if filling out the lunch form
- 7) Possibly \* Name & dosage of medicine if leaving at school

## How To Obtain Missing Required Documents

Copy of a birth - marriage - death - divorce certificate:

All states: <https://www.cdc.gov/nchs/w2w/>

Arkansas phone # 1-501-661-2336

Cost \$10-\$15

New social security number or replacement card :

<https://www.ssa.gov/ssnumber/>

Phone # 1-800-772-1213

Shot record & view list of required immunizations:

<https://www.cdc.gov/vaccines/parents/records-requirements.html>

Arkansas phone #1-800-661-2000

Independence County Health Department # 870-793-8847

### **School Open House**

In August, there is usually an evening set aside for you to visit your child's classroom and meet the teacher. This should be a positive experience for the child to help with separation on the first day of class. Help your child find his name around room, his/her chair, locate the bathroom, walk to the lunch room, playground, and the bus or car pick up line. You can help make the transition to kindergarten a great experience for your child.

### **Transportation by Bus**

Most districts will explain the bus route and times to you when you register your child for kindergarten. However, times and routes can change over the summer, so please check at the fall open house in August for changes in bus numbers and times.

When you give the secretary your address they will look at the master chart and tell you the:

- 1) bus number & symbol or the animal in the window for the child to spot
- 2) time of the morning pick-up
- 3) time of the afternoon drop off
- 4) if they will have to transfer buses to reach their school
- 5) the bus drivers name

Some bus routes allow for dropping the child off close to the driveway and other stops may be at the corner of the road. In some cases there is a general parking lot or business where parents may meet the bus to take their children home. Again this varies with each school district.

Call the school office or the transportation department with specific route questions if they are not answered during registration. If your child needs dropped at a different location for a day, you must call the school or send a written note for the office early in the day. This allows time for the teacher to get him/her on the right bus with the correct bus pass for the driver to know the address.

### **Car Riders**

To speed up the car pick-up line, most campuses ask you to write your child's name in big bold print on a piece of paper and leave on the dashboard. It only takes a few weeks for all the staff to learn the new kindergarteners name and your vehicle.

### **School Supplies**

Every school campus handles school supplies differently. You will find out on kindergarten registration day if you will pay a fee for the school to purchase the needed supplies or if your child's teacher has a specific list for you to purchase on your own.

If purchasing supplies or a backpack puts a burden on your family, talk with the school counselor or principal. They will help you with your needs

### **Lunch Money & Payment**

At kindergarten registration or the first day of school, you should be given a form for free and/or reduced lunch. You will need to fill out the form and submit it with proof of income to the office as soon as possible for verification. You will be notified if you qualify for assistance.

If you do not qualify or still owe some money, the teacher will instruct you on when and how to pay. If you send a check or cash with your kindergartener please put it in an envelope with your child's name and a note on what the money is to be used for.

Most school websites have an EZ Pay link so parents can pay online for lunches. Any money left over will carry over to the next week and even the next school year. You can make a deposit and the system will notify you when your account is running low.

### Allergies & Medicine

Contact the school nurse and fill out the proper forms if medicine needs to be taken at school. Food allergies need to be reported to the nurse but you should also let the principal and classroom teacher know in writing. In addition, if your child has a severe food allergy you may need to contact the cafeteria supervisor.

### District Messaging System & Phone Numbers

All districts have a school wide messaging system for important announcements like school closings and bus route changes. It is imperative you keep your phone number up to date. Some systems call and leave a voicemail, others will send a text, and some are able to send emails.

It is your responsibility to make sure your number stays current in case of a sick child or an emergency. Also, you need to update your address if you move in order to receive mailed communications and grades.

### Online Grade Access

The school district website has a link to access student grades and attendance anytime. It should be located under the student tab labeled HAC (Home Access Center). The student will be assigned an ID and a password. You will have to obtain the information from the office. The passwords usually change every year.

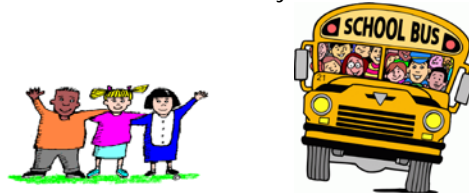
### Extended Childcare Hours for School Age Children

Batesville School After School Care (Kid Care): 870-612-5676

Batesville Kid Care is for school age children (K – 6<sup>th</sup> grade) in the Batesville School System. The program provides a safe, fun environment for children whose parents are not available to pick them up at the end of the school day.

Batesville Summer Star Program: 870-612-5676

The STAR Program is open from 6:00a.m. to 5:30p.m. The summer's activities include swimming, bowling, miniature golf, and gymnastics activities. There are many activities to choose from, both inside and outside.



**Batesville School District**

Website: [Batesvilleschools.com](http://Batesvilleschools.com)  
 Administration Office # 870-793-6831  
 Central Elementary #870-793-7498  
 Eagle Mountain Elementary #870-698-9141  
 Sulphur Rock Elementary #870-799-3374  
 West Elementary #870-793-9878  
 Transportation #870-793-0620

**Calico Rock School District**

Website: [Pirates.k12.ar.us](http://Pirates.k12.ar.us)  
 Administration Office #870-297-8339  
 Elementary Office #870-297-8533  
 Transportation #870-297-8339

**Cave City School District**

Website: [Cavecity.k12.ar.us](http://Cavecity.k12.ar.us)  
 Administration Office #870-283-5391  
 Cave City Elementary Office #870-283-5393  
 Transportation #870-283-5391

**Highland School District**

Website: [Highlandrebels.k12.ar.us](http://Highlandrebels.k12.ar.us)  
 Administration Office #870-856-3273  
 Highland Elementary #870-257-3118  
 Highland Middle School #870-856-3284  
 Transportation #870-856-3273

**Melbourne School District**

Website: [Barkatz.k12.ar.us](http://Barkatz.k12.ar.us)  
 Administration Office #870-368-7070  
 Elementary Office #870-368-4365  
 Transportation #870-368-7070

**Mountain View School District**

Website: [Violaschool.k12.ar.us](http://Violaschool.k12.ar.us)

Website: [Mountainviewschoolsdistrict.k12.ar.us](http://Mountainviewschoolsdistrict.k12.ar.us)  
 Administration Office #870-269-3443  
 Transportation #870-269-3922

Website: [MVES.k12.ar.us](http://MVES.k12.ar.us)  
 Mountain View Kindergarten #870-269-9706  
 Mountain View Elementary #870-269-3104  
 Transportation #870-269-3922

Website: [Ruralspecial.com](http://Ruralspecial.com)  
 Rural Special Campus #870-363-4365  
 Transportation #870-363-4365

Website: [Timbotigers.k12.ar.us](http://Timbotigers.k12.ar.us)  
 Timbo Campus #870-746-4303  
 Transportation #870-746-4303

**Salem School District**

Website: [Salem.k12.ar.us](http://Salem.k12.ar.us)  
 Administration Office #870-895-2516  
 Elementary Office #870-895-5623

**Southside School District**

Website: [Southsideschools.org](http://Southsideschools.org)  
 Administration Office #870-251-2341  
 Elementary Office #870-251-2661

**Viola School District**

Administration Office #870-458-2323

Elementary Office #870-458-2511